

# PANDEMIC MOBILITY: TRANSPORTATION MATTERS

ISLAND-WIDE MOBILITY

NOW AND INTO THE FUTURE

# ABOUT ME

**Jon Y. Nouchi**

Deputy Director

Department of Transportation Services

City and County of Honolulu



*Previously served at:* Honolulu Authority for Rapid Transportation (HART)  
O‘ahu Transit Services (TheBus)

# CITY & COUNTY OF HONOLULU'S DEPARTMENT OF TRANSPORTATION SERVICES

- Planning
- Engineering
- Mobility
- Technology



SO, WHAT DID EVERYONE LEARN OVER THE LAST YEAR?





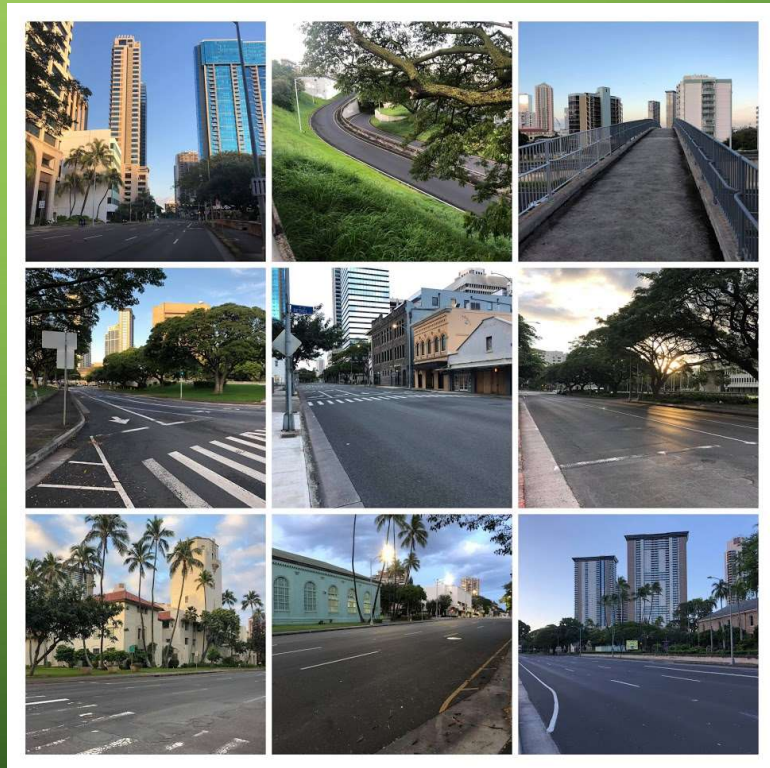
# CHALLENGING TIMES, ESSENTIAL TRANSPORTATION

- Transportation is an essential service
- Transportation workers are essential employees
- How do we protect our employees?



# CHALLENGING TIMES, ESSENTIAL TRANSPORTATION

- Honolulu's residents experienced new needs with Stay-At-Home orders
- How do we meet the needs of local residents and businesses while staying safe?



# SHIFTING PRIORITIES





# SHIFTING PRIORITIES





# SOUND THE HORN!

Transit agencies across the nation **sounded their horns** simultaneously on Thursday, May 21, 2020, to **honor essential transit workers**, including many who have perished in their duties to provide mobility to the masses. (One bus driver in Honolulu has died because of COVID-19).



# RELAX AND RECREATE





# RELAX AND RE-CREATE





# TRYING NEW THINGS

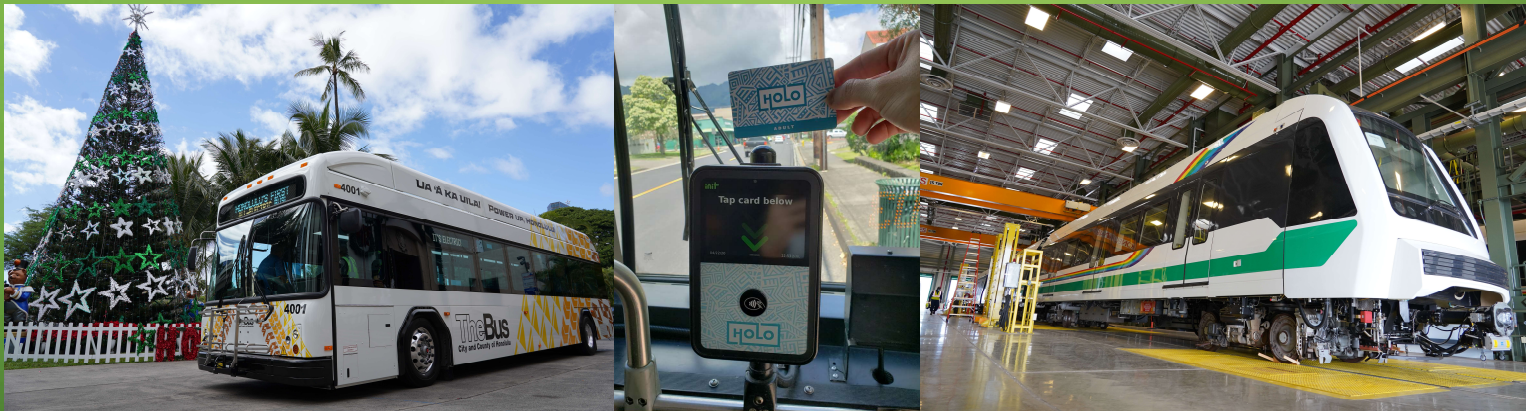




# TRYING MORE NEW THINGS

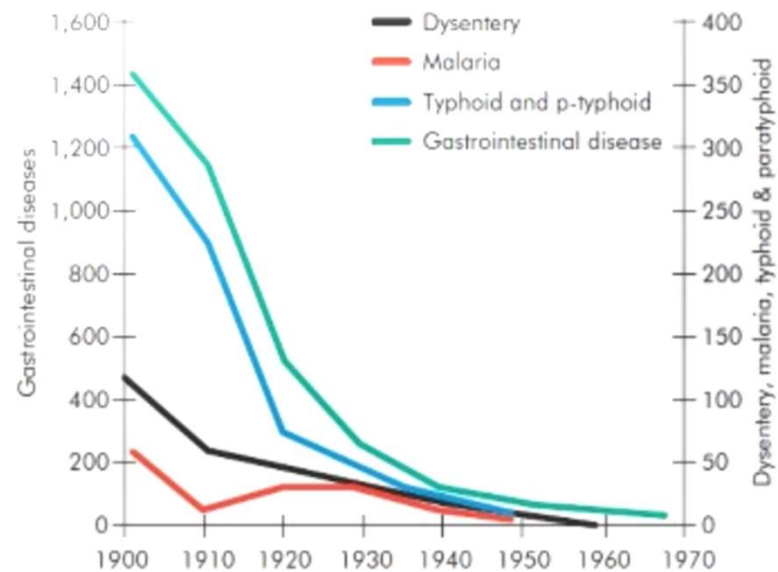


# PLANNING FOR OUR FUTURE



# GREAT TRANSPORTATION IS LIKE CLEAN WATER...

Figure 13 **Death rates for various water related diseases, 1900–1970**



Source: Goklany (2007a), based on USBC (various years, 1975)



...WE ALL NEED MORE OF IT  
FOR BETTER HEALTH

*“Remember, this is water.”*

– Sam Hashemi, Remix





# MAYBE IT LOOKS LIKE THIS...

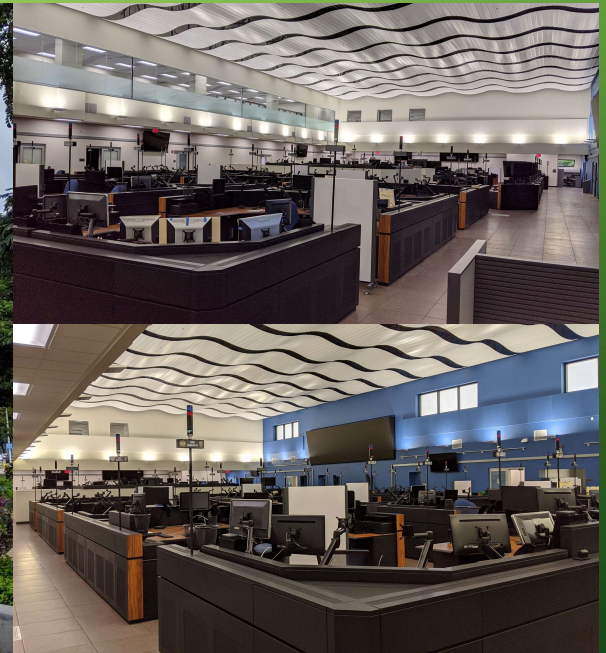


OR THIS...





# AND DEFINITELY THIS...



# LET'S MOVE TOGETHER... WITH ALOHA!

**Jon Y. Nouchi**

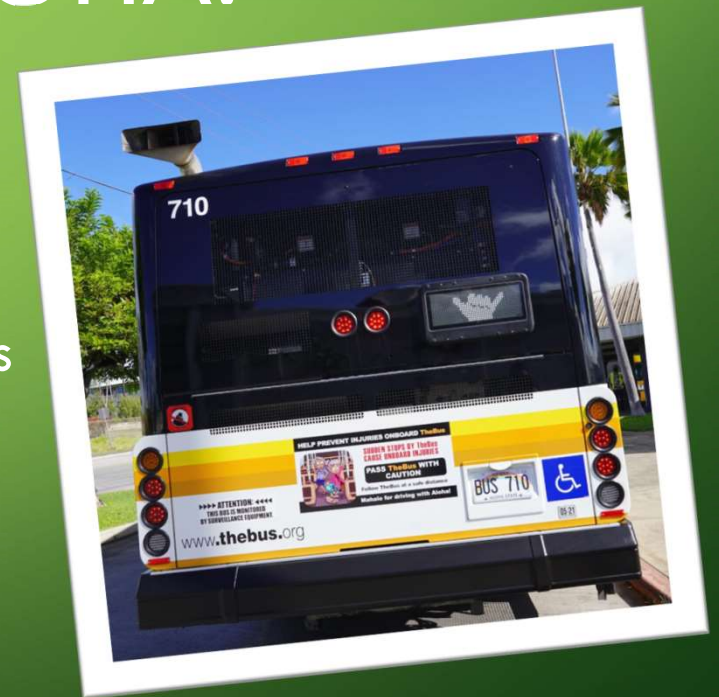
Deputy Director

Department of Transportation Services

City and County of Honolulu

[jnouchi@honolulu.gov](mailto:jnouchi@honolulu.gov)

[www.honolulu.gov/dts](http://www.honolulu.gov/dts)



## MAHALO NUI!